

BOOK 4

Dedicated to the Nerves, Showing Figures Peculiar to It in Front of the Chapters to Which They Are Suited

2014

1543

1555

CHAPTER 1

838	TO WHAT PARTS OF THE BODY THE NAME OF NERVE IS GIVEN, WHAT IS PROPERLY CALLED A NERVE, AND WHAT IT IS, TOGETHER WITH ITS TYPE AND FUNCTION	315 [415]	507
838	The Generic Term "Nerve" Is Applied to Ligaments, Tendons, and Processes of the Brain and Dorsal Medulla	315 [415]	507
838	The Organ Specifically Called a Nerve	315 [415]	507
839	Origin of Nerves from the Brain	315 [415]	507
839	Not from the Heart	315 [415]	507
840	The Nerves Do Not Arise from the Hard Cerebral Membrane	316 [416]	508
840	What Parts Make Up a Nerve	316 [416]	508
840	From Where Animal Spirit Is Provided to the Nerves	316 [416]	508
840	Differentiation of Nerves Based on Hardness and Softness, upon Which Many Types of Nerve Are Based	316 [416]	509
841	Why Some Nerves Are Made Softer or Harder Than Others	317 [417]	509
841	The Purpose of Nature in Distributing the Nerves	317 [417]	509
842	Differences Based upon the Form of Their Origin	317 [417]	510
842	Every Nerve Possesses a Sense of Touch	317 [417]	510
843	Differences of Nerves Depending on Their Inner Cavity	317 [417]	510
843	Differences Based upon Distribution	317 [417]	510
843	Nerves Originate in Pairs	318 [418]	511

2014

1543

1555

CEREBRUM AND CEREBELLUM

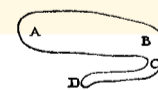


844	FIRST OF TWO FIGURES COMMON TO THE NINE CHAPTERS TO FOLLOW, WHERE THE BASE OF THE ENTIRE CEREBRUM AND CEREBELLUM IS ILLUSTRATED FREE FROM THE SURROUNDING MEMBRANES TO PROVIDE A CONVENIENT VIEW OF THE ORIGINS OF THE CEREBRAL NERVES	318 [418]	511
845	SECOND OF TWO FIGURES WHICH ARE CONSIDERED COMMON TO THE NINE FOLLOWING CHAPTERS	319 [419]	512
846	Legend of Characters to the Two Figures Common to the Next Nine Chapters	320 [420]	513

CHAPTER 2

850	HOW MANY PAIRS OF NERVES TAKE THEIR ORIGIN FROM THE BRAIN AND FROM THE PART OF THE DORSAL MEDULLA STILL SITUATED IN THE SKULL	322 [422]	514
850	How the Areas of the Brain and Its Parts Will Be Distinguished in Book Seven	322 [422]	514
850	The Ventricles or Sinuses of the Brain	322 [422]	514
851	Where Cerebral Nerves Begin	322 [422]	515
851	Beginning of the Dorsal Medulla	322 [422]	515
851	How Many Pairs of Cerebral Nerves	322 [422]	515

CHAPTER 3



852	SOME REMARKS ON THE ORGAN OF SMELL	322 [422]	515
852	Numerous Opinions about the Organ of Smell	322 [422]	515
852	Course of the Anterior Ventricles of the Brain	323 [423]	516
853	Origin of the Processes That Are either the Organ of Smell or Its Primary Instrument	323 [423]	516

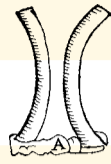


2014

1543

1555

CHAPTER 4



855	ON THE FIRST PAIR OF NERVES ORIGINATING FROM THE BRAIN	324 [424]	517
855	Origin of the First Pair	324 [424]	517
855	Entry of the First Pair of Nerves	324 [424]	517
855	Entry into the Eye, and the Widening into the Tunic That We Compare to a Net	324 [424]	517
856	Whether the Visory Nerves Are Hollow	324 [424]	517

CHAPTER 5

858	ON THE SECOND PAIR OF CEREBRAL NERVES	325 [425]	519
-----	--	-----------	-----

CHAPTER 6

859	ON THE THIRD PAIR OF CEREBRAL NERVES	325 [425]	519
859	The Double Root of the Third Pair on Each Side	325 [425]	519
859	Origin and Distribution of the Thinner Root	325 [425]	519
860	Origin and Distribution of the Thicker Root	326 [426]	520

CHAPTER 7

861	ON THE FOURTH PAIR OF CEREBRAL NERVES	326 [426]	520
-----	--	-----------	-----

2014

1543

1555

CHAPTER 8

862	DISTRIBUTION OF THE FIFTH PAIR OF CEREBRAL NERVES	326 [426]	521
862	Nerve Taking Its Origin next to the Root of the Fifth Pair	327 [427]	521
863	How Many Nerve Offshoots Are Presented to the Temporal Muscle	327 [427]	521

CHAPTER 9



864	ON THE SIXTH PAIR OF CEREBRAL NERVES	327 [427]	522
866	Right Recurrent Nerve	328 [428]	523
866	Left Recurrent Nerve	328 [428]	523
866	Why the Recurrent Nerves Were Made	329 [429]	524
867	Remaining Distribution of the Sixth Pair in the Thoracic Cavity	329 [429]	524
867	Distribution of the Sixth Pair into the Organs of Nutrition	329 [429]	524

CHAPTER 10

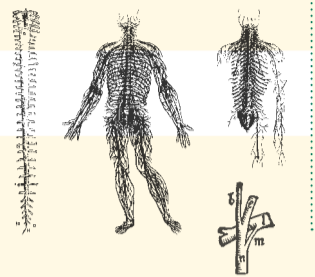
869	ON THE SEVENTH PAIR OF CEREBRAL NERVES	330 [430]	525
-----	---	-----------	-----

2014

1543

1555

DORSAL MEDULLA
NERVE PAIRS FROM DORSAL MEDULLA



871	FIRST OF THREE FIGURES COMMON TO THE CHAPTERS THAT FOLLOW	331 [431]	526
873	BARE DRAWING OF THE THIRTY NERVE PAIRS THAT TAKE THEIR ORIGIN FROM THE DORSAL MEDULLA CONTAINED IN THE BONES OF THE SPINE, DRAWN TO THE SAME SCALE AS WE SHOWED THE DRAWINGS OF THE VENA CAVA AND THE GREAT ARTERY		
	THIS IS NUMBERED THE SECOND OF THE THREE FIGURES COMMON TO THE CHAPTERS THAT FOLLOW	[432]	527
875	THIRD OF THREE FIGURES COMMON TO THE CHAPTERS THAT FOLLOW	333 [433]	528
876	Character Index of the Two Figures in Which the Series of Nerves of the Dorsal Medulla Is Illustrated	334 [434]	529
886	APPENDIX: Revised Drawing and Numerical Characters of the Second of the Three Figures Preceding Chapter 11	-	527

CHAPTER 11

888	ON THE DORSAL MEDULLA AND THE NUMBER OF NERVES COMING FROM IT	338 [438]	533
888	Difference between the Dorsal Medulla and the Medulla of Bones	338 [438]	533
888	The Need to Create the Dorsal Medulla	338 [438]	533
888	How the Dorsal Medulla Is Protected	338 [438]	533
889	Bones; Membranous Wrappings	338 [438]	533
889	What Things the Dorsal Medulla Has in Common with the Brain, and What Things Are Peculiar to Itself	339 [439]	-
889	Why There Is Only One Dorsal Medulla	339 [439]	534
890	Where the Dorsal Medulla Is Composed as if from Many Strands	339 [439]	534
890	How Many Nerve Pairs Are Split Off the Dorsal Medulla	339 [439]	534

2014

1543

1555

CHAPTER 12

891	DISTRIBUTION OF THE SEVEN PAIRS OF NERVES COMING FROM THE CERVICAL VERTEBRAE	340 [440]	534
891	The Path Nature Prepared for the First Pair	340 [440]	534
892	Exit and Distribution of the Second Pair	340 [440]	535
892	Distribution of the Third Pair	340 [440]	536
893	Distribution of the Fourth Pair	341 [441]	536
893	Distribution of the Fifth Pair	341 [441]	536
893	Make-Up of the Nerves of the Transverse Septum	341 [441]	536
894	The Rest of the Anterior Branch of the Fifth Pair	341 [441]	537
895	Distribution of the Sixth Pair	342 [442]	537
895	Distribution of the Seventh Pair	342 [442]	538

CHAPTER 13

896	DISTRIBUTION OF THE TWELVE PAIRS OF NERVES OF THE DORSAL MEDULLA CONTAINED IN THE THORACIC VERTEBRAE	342 [442]	538
896	Distribution of the First Thoracic Pair, or Eighth Pair of Nerves, from the Dorsal Medulla	342 [442]	538
897	Distribution of the Ninth Pair	343 [443]	539
897	Distribution of the Remaining Pairs Coming out of the Thoracic Vertebrae	343 [443]	539
898	Nerves to the Nipples	343 [443]	540

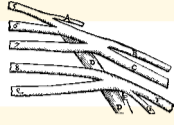


2014

1543

1555

CHAPTER 14



899	DISTRIBUTION OF NERVES INTO THE ARM AS A WHOLE	344 [444]	540
900	From Which Pairs Nerves Are Brought into the Arm	344 [444]	541
900	The Complex of Nerves Entering the Arm	344 [444]	541
900	First Nerve	345 [445]	541
900	Nerves Entering the Skin Do Not Always Show the Same Distribution	345 [445]	541
900	Entry of the Second Nerve	345 [445]	541
901	Entry of the Third Nerve	345 [445]	542
901	Meeting of the Second and Third Nerves	345 [445]	542
901	Remaining Distribution of the Second Nerve	345 [445]	542
902	Course of the Third Nerve as Far as the Bend of the Elbow	346 [446]	543
902	Entry of the Fourth Nerve into the Arm, and Its Distribution	346 [446]	543
904	Entry of the Fifth Nerve into the Arm; Its Distribution with the Third	347 [447]	544
906	How the Distribution of Nerves into the Arm Can Be Tested without Dissection	348 [448]	546
906	Sensation Dies when Motion Is Preserved, and the Contrary	348 [448]	546
907	Entry into the Arm of the Sixth Nerve, and Its Distribution	348 [448]	547
907	Thickness of the Nerves	349 [449]	547

CHAPTER 15

908	DISTRIBUTION OF THE FIVE NERVE PAIRS PROCEEDING FROM THE LUMBAR VERTEBRAE	349 [449]	547
-----	--	-----------	-----

CHAPTER 16

909	DISTRIBUTION OF NERVES COMING FROM THE SACRUM	349 [449]	548
-----	--	-----------	-----

2014

1543

1555

CHAPTER 17

911	SYSTEM OF DISTRIBUTION OF THE NERVES GOING TO THE THIGH, LOWER LEG, AND FOOT	350 [450]	549
911	Four Nerves Go to the Leg	350 [450]	549
911	Distribution of the First Nerve	350 [450]	549
911	Distribution of the Second Nerve	350 [450]	549
912	Distribution of the Third Nerve	351 [451]	550
912	Distribution of the Fourth Nerve	351 [451]	550
913	How the Fourth Nerve Looks as if It Were Made Up of Several Cords	351 [451]	551
915	APPENDIX: Revised Version of the Distribution of the Fourth Nerve in the Lower Leg	-	551

COMPLETE ILLUSTRATION OF THE NERVES



917	ILLUSTRATION OF THE NERVES SHOWING THE ORIGINS OF THE SEVEN NERVE PAIRS THAT ARISE FROM THE CEREBRUM AND THE BEGINNING OF THE DORSAL MEDULLA, AND MOST ATTRACTIVELY REPRESENTING THE SYSTEM OF DISTRIBUTION OF ALL THAT TAKE THEIR ORIGIN FROM THE DORSAL MEDULLA CONTAINED IN THE SPINE, AS THE INDEX OF CHARACTERS IN THIS FIGURE WILL EXPLAIN	353/354 [453/454]	553/554
-----	---	-------------------	---------