

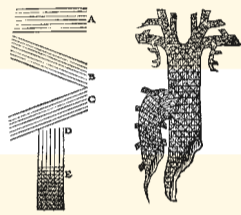
BOOK **3**

In Which the Series of Veins and Arteries throughout the Entire Body Is Described and the Figures Peculiar to It Are Placed at the Beginning of the Chapters to Which They Belong

2014

1543

1555

CHAPTER **1**

698	WHAT IS A VEIN: ITS SUBSTANCE AND FUNCTION	257 [357]	436
698	What Will Be Explained in the Third Book	257 [357]	436
698	What Is a Vein	257 [357]	436
698	How the Body of a Vein Differs from a Membrane	257 [357]	436
698	Which of the Fibers Are Responsible for Natural Motion, and How They Differ from Those That Serve Voluntary Motion	257 [357]	436
699	Types and Function of Fibers	258 [358]	437
700	Usefulness of the Vein's Composition	258 [358]	438
701	Tunic That Is Associated and Not Peculiar to the Vein	258 [358]	438
701	The Function of Veins	258 [358]	438

CHAPTER **2**

702	WHAT IS AN ARTERY: ITS SUBSTANCE AND FUNCTION	259 [359]	439
702	What Is an Artery	259 [359]	439
702	What the Body of an Artery Is like; Its Two Particular Tunics	259 [359]	439
703	Associated Arterial Tunics	260 [360]	440
703	Reason for the Artery's Construction	260 [360]	440

2014

1543

1555

CHAPTER **3**

704	THE NUMBER OF VEINS AND ARTERIES	260 [360]	440
704	Four Veins	260 [360]	440
704	Two Arteries	260 [360]	441
705	Nature's Artifice in the System of Veins and Arteries	260 [360]	–

CHAPTER **4**

706	ON THE GLANDULES PLACED WHERE THE VESSELS BRANCH AND ATTACHED TO THEM FOR STRENGTH	260 [360]	441
706	Why and When Glandules Are Placed at the Divisions of Vessels	261 [361]	441
707	The Name of the Glandular Substance, and Its Weakness	261 [361]	–
707	Differentiation of Glandules by Name, Color, and Appearance	261 [361]	–
707	Differentiation by Function	261 [361]	–
708	APPENDIX: Revised Version of Vesalius' Chapter on the Lymph Glands	–	441
708	Why and When Glandules Are Placed on Vein Branches	–	441
709	Not All Glands Suited to the Distribution of Vessels Perform That Function Only	–	442
710	How Nature Provided for the Strength of the Veins' Own Bodies in the Density of the Places Where They Divide	–	442

CHAPTER **5**

711	THE BEGINNING OF THE PORTAL VEIN, AND ITS SYSTEM OF BRANCHES	262 [362]	443
712	Index of Characters in the Drawing of the Exposed Portal Vein	262 [362]	443
715	Series of Branches of the Portal Vein in the Body of the Liver	264 [364]	445
715	Distribution of the Trunk outside the Liver: To the Gall Bladder; to the Lower Orifice of the Stomach	264 [364]	445
715	Partition of the Trunk into Two Principal Divisions	264 [364]	445

2014

715	To the Right Side of the Bottom of the Stomach and the Adjacent Part of the Omentum	264 [364]	445
716	To the Duodenum	264 [364]	446
716	Distribution of the Left Trunk	264 [364]	446
718	Group Belonging to the Right Trunk of the Portal Vein	266 [366]	447
719	Purpose of the Distribution of the Portal Vein	266 [366]	448
720	Names of the Portal Vein	266 [366]	449
720	The Portal Vein Does Not Make Blood	267 [367]	449
721	Black Bile Is Purged through the Branches of the Portal Vein	267 [367]	449

1543

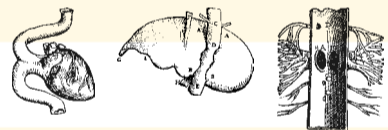
1555

COMPLETE VIEW OF THE VENA CAVA



723	COMPLETE VIEW OF THE VENA CAVA BARE AND FREE OF ALL BODY PARTS	268 [368]	450
724	Index of Characters	267 [367]	451
736	APPENDIX: Revised Version of the Veins of the Lower Leg	-	455

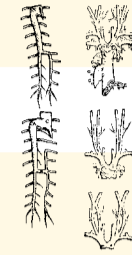
CHAPTER 6



738	HOW BRANCHES OF THE VENA CAVA ARE JOINED TO OFFSHOOTS OF THE PORTAL VEIN IN THE SUBSTANCE OF THE LIVER, AND HOW THE VENA CAVA COMES OUT OF THE LIVER OR DISTRIBUTES BRANCHES INTO IT	275 [375]	455
738	A Lengthy Dispute by Writers on the Origin of the Vena Cava	275 [375]	455
738	Galen's Arguments against Aristotle on the Origin of the Vena Cava Are Not All Divinely Inspired	275 [375]	455
741	A Description of the Distribution of the Vena Cava Must Be Started from the Liver	276 [376]	457
741	Distribution of the Vena Cava in the Liver	276 [376]	458
741	Names of the Vena Cava	276 [376]	458

2014

CHAPTER 7



744	DISTRIBUTION OF THE PART OF THE VENA CAVA SITUATED ABOVE THE LIVER	278 [378]	459
744	The Part of the Vena Cava Going through the Transverse Septum Is Not Smaller Than the Part below the Liver	278 [378]	459
745	Transit of the Vena Cava through the Septum, and Its Branches into the Septum	278 [378]	460
745	Opening of the Vena Cava into the Right Cavity of the Heart	278 [378]	460
745	The Vein Circling the Base of the Heart	278 [378]	460
746	Why the Unpaired Vein Needed to Be Brought from the Vena Cava	279 [379]	460
747	Variant Tributaries of the Unpaired Vein	279 [379]	461
748	Features That Do Not at This Point Agree with Galen's Views	280 [380]	-
749	Galen's Views about the Origin of the Unpaired Vein	281 [381]	463
750	Where the Unpaired Vein Had To Begin	281 [381]	464
750	Why It Is Not Always Necessary to Explain Where My Account Differs from the Views of Galen	282 [382]	-
751	Course of the Vena Cava to the Throat	282 [382]	464
751	Partition of the Stem of the Vena Cava in the Throat; Origin of the Vein Forming the Axillary	282 [382]	464
751	Vein to the Upper Intervals between the Ribs	282 [382]	464
751	Veins Passing Downward beneath the Pectoral Bone	282 [382]	465
752	Several Veins Distributed from the Vein Going to the Armpit before It Enters the Arm	283 [383]	465
753	System of the Vena Cava through the Neck and Head	283 [383]	466
753	Inner Jugular	283 [383]	466
754	The Exterior Jugular and the Beginning of the Humeral Vein before It Enters the Arm	284 [384]	467
754	Distribution of the Outer Jugular	284 [384]	467

1543

1555



2014

1543

1555

CHAPTER 8

757	DISTRIBUTION OF THE AXILLARY AND HUMERAL VEINS THROUGH THE ARM	285 [385]	469
757	Distribution of the Humeral Vein next to the Elbow Joint	285 [385]	469
758	The Axillary Vein System in the Upper Arm	286 [386]	470
759	Chief Division of the Axillary into Two Trunks	286 [386]	471
759	Portion of the Axillary Vein Close to the Skin	287 [387]	471
760	Formation of the Common Vein	287 [387]	471
760	[Posterior Vein of the Division of the Axillary]	–	–
760	System of the Common Vein	287 [387]	472
761	The Series of Veins Implicating the Skin of the Hand Is Varied	287 [387]	472
761	Vein Distributions Frequently Vary	288 [388]	473

CHAPTER 9



762	PORTION OF THE VENA CAVA DISTRIBUTED TO THE PARTS LOCATED BELOW THE TRANSVERSE SEPTUM	288 [388]	473
762	Vein to the Covering of the Left Kidney	288 [388]	473
762	Vein to the Covering of the Right Kidney	288 [388]	473
762	Veins to the Kidneys	288 [388]	473
763	System of the Left Seminal Vein	288 [388]	474
763	Seminal Veins in Women	289 [389]	474
764	Branches of the Vena Cava Offered to the Lumbar Vertebrae and Their Fleishy Tissues	289 [389]	475
764	How the Vena Cava Lies beneath the Large Artery above the Beginning of the Sacrum; Its Course in This Area	289 [389]	475
765	Veins from Which Menstrual Purgations Are Believed to Flow in Virgins	290 [390]	476
765	The Vein Going to the Thigh through the Foramen of the Pubic Bone	290 [390]	476

2014

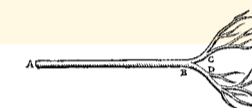
1543

1555

CHAPTER 10

767	BRANCHES OF THE VENA CAVA DISTRIBUTED INTO THE LEG	291 [391]	477
767	How Many Roots of Veins Go to the Leg	291 [391]	477
767	The Greater Vein of the Thigh	291 [391]	477
770	How to Learn the Veins Woven into the Skin	293 [393]	–
771	Names of the Veins Entering the Skin of the Foot	293 [393]	–
771	APPENDIX: Revised Version of the End of Chapter 10 on the Veins of the Lower Leg	–	478
773	Galen's Descriptions of the System of the Vena Cava in the Leg Are Inconsistent and Inaccurate	–	480

CHAPTER 11



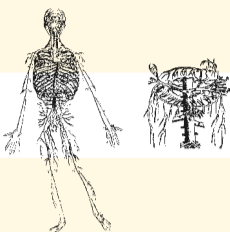
774	ON THE UMBILICAL VEIN	293 [393]	481
774	How the Umbilical Vein and Arteries Originate	294 [394]	–
775	Course of the Umbilical Vein	294 [394]	–
775	The Course of the Arteries	294 [394]	–
775	Function of the Umbilical Vein and Arteries	294 [394]	–
776	APPENDIX: Revised Version of Chapter 11	–	481
776	What the Umbilical Vein Is Called	–	481
776	Where the Beginning of the Umbilical Vein Emerges, and Its Pattern of Distribution	–	481
777	Distribution of the Umbilical Arteries	–	482

2014

1543

1555

COMPLETE DIAGRAM OF THE GREAT ARTERY



779	COMPLETE DIAGRAM OF THE ENTIRE GREAT ARTERY FREE OF ALL PARTS, REFERRING JOINTLY TO THE TWO CHAPTERS IMMEDIATELY FOLLOWING	295 [395] 483
780	Index of Characters in the Complete Delineation of the Great Artery Shown on the Following Page	294 [394] 482

CHAPTER 12

788	WHERE THE GREAT ARTERY BEGINS, AND INTO WHAT BRANCHES ITS ASCENDING PART IS DISTRIBUTED	298 [398] 485
788	There Is No Lengthy Controversy about the Origin of the Great Artery	298 [398] 485
788	Arteries Do Not Originate from the Brain or the Extremities of the Body	298 [398] 485
789	Where the Artery Begins	299 [399] 485
789	Coronary Arteries	299 [399] 486
789	The Fork in the Stem of the Artery	299 [399] 486
789	Divisions of the Ascending Part: First, That of the Artery Passing Diagonally to the First Rib on the Left Side	299 [399] 486
790	Distribution of the Portion Going to the Left Armpit	300 [400] 487
791	Arterial Branch Whose Pulse We Take above the Wrist	300 [400] 488
792	Nature Hides the Arteries	300 [400] 488
792	Distribution of the Larger Portion of the Great Artery, Which Goes to the Upper Parts of the Body	300 [400] 488
792	The Left Sleep Artery	300 [400] 488
792	Artery Going to the Right Arm	301 [401] 488
792	The Right Sleep Artery	301 [401] 488
793	Distribution of the Sleep Artery to the Skull	301 [401] 489

2014

1543

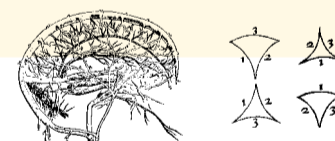
1555

CHAPTER 13



794	DISTRIBUTION OF THE LARGER, DESCENDING TRUNK OF THE GREAT ARTERY INTO ITS BRANCHES	301 [401] 489
794	Arteries to the Lower Intervals between the Ribs	301 [401] 489
794	Arteries to the Transverse Septum	301 [401] 490
794	Branches of the Great Artery Going to the Omentum, Liver, Gall Bladder, Stomach, Spleen, Duodenum, and Part of the Colon	302 [402] 490
796	The Principal Artery to the Mesentery	302 [402] 491
796	Renal Arteries	302 [402] 491
796	Seminal Arteries	302 [402] 491
796	Artery to the Lower Part of the Mesentery	303 [403] 491
796	To the Lumbar Vertebrae and Fleshy Tissues	303 [403] 491
797	Division of the Great Artery above the Sacrum; Ascent of the Artery above the Vena Cava	303 [403] 492
797	Distribution of the Trunks Separating above the Sacrum	303 [403] 492
798	Artery Passing through the Foramen of the Pubic Bone	303 [403] 492
798	Arteries in the Leg	304 [404] 493
800	APPENDIX: Revised Version of the Description of the Arteries of the Lower Leg	- 493
800	Distribution of the Artery through the Lower Leg and Foot	- 493

CHAPTER 14



802	VEINS AND ARTERIES OF THE BRAIN	305 [405] 494
802	Index of the Figure for the Fourteenth Chapter and Its Characters	305 [405] 494
804	Six Veins Entering the Skull from Either Side	306 [406] 496
804	Three Arteries Entering the Skull from Either Side	307 [407] 496
804	The Veins Are Not Attached to the Substance of the Brain but Are Woven into Its Membranes, Which Are Hollow like Veins	307 [407] 496



2014		1543	1555
805	Function of the Sinuses of the Hard Cerebral Membrane	307 [407]	497
805	What the Sinuses of the Cerebral Membranes Are Like	307 [407]	497
805	System of the Vein and Artery Draining into the First Sinus of the Hard Membrane, and of the Sinus Itself	307 [407]	497
806	Meeting of the First and Second Sinuses	308 [408]	497
806	Third Sinus	308 [408]	497
806	Fourth Sinus	308 [408]	498
806	What the Four Sinus Cavities Are Like	308 [408]	498
807	Offshoots Originating from the First and Second Sinuses	308 [408]	498
807	Offshoots from the Third Sinus	308 [408]	498
808	Offshoots from the Fourth Sinus	309 [409]	499
808	Process Going to the Ventricles from the Fourth Cerebral Sinus	309 [409]	499
809	What the Cerebral Torcular Is	309 [409]	500
809	Distribution of the Third Vein Going to the Skull	310 [410]	500
809	Distribution of the Fifth and Sixth Veins	310 [410]	500
810	Distribution of the Third Artery	310 [410]	500
810	Make-Up of the Network in the Anterior Ventricles of the Cerebrum	310 [410]	501
811	What Is Galen's Reticular Plexus?	310 [410]	501

CHAPTER 15



812	ON THE ARTERIAL VEIN AND THE VENOUS ARTERY	311 [411]	502
812	Index of the First Figure of the Fifteenth Chapter and Its Characters	311 [411]	502
813	Index of the Second Figure of the Fifteenth Chapter and Its Characters	311 [411]	503
814	Remaining Vessels in the Description of Arteries and Veins	312 [412]	503
814	Where to Find an Account of Veins and Arteries Lacking a Companion Vessel	-	503

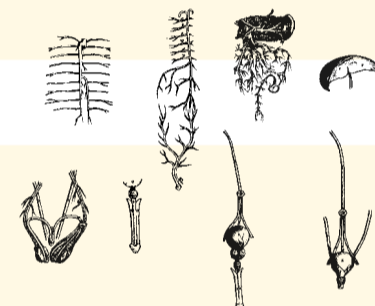
2014		1543	1555
------	--	------	------

COMPLETE VIEW OF THE VEINS AND ARTERIES



817	COMPLETE AND SEPARATE DRAWING OF ALL THE VEINS AND ARTERIES, PREPARED CHIEFLY TO SHOW WHICH VEINS RUN WITH ARTERIES, WHICH ONES PASS THROUGH THE BODY WITHOUT COMPANION ARTERIES, AND WHAT ARTERIES NATURE DEPRIVED OF COMPANION VEINS	313r [413r]	505
818	Index of All Characters Occurring in This Figure with Parts Belonging to Them	313r [413r]	504

SUPPLEMENTARY FIGURES



828	CHART COMBINING SEVERAL SMALL FIGURES PREPARED FOR THE FIGURE SHOWING THE COLLECTIVE SYSTEM OF VEINS AND ARTERIES; THEY SHOULD BE ATTACHED TO THE FIGURE SEEN ON THE PAGE MARKED m3 OR NUMBER 313	-	-
-----	--	---	---